

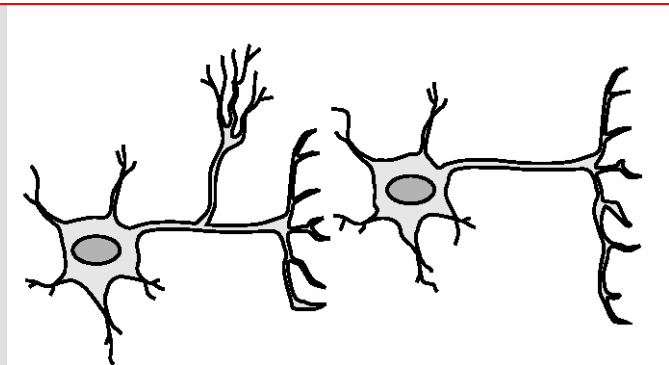
## 12 Weeks to TAKS- Week 8 Teacher Guide

### Objective 2 4b, 10a,b

#### Answers to "Your Turn" part 1

1. Osmosis, 2. Diffusion, 3. Osmosis, 4. Both
1. Respiration, 2. Photosynthesis, 3. Photosynthesis, 4. Both
1. Mitosis, 2. Meiosis, 3. Both, 4. Meiosis

#### Answers to "Your Turn" part 2



1. In the diagram above, one cell creates and releases chemicals that travel to a second cell and quickly induce that cell into action. This diagram represents part of the —

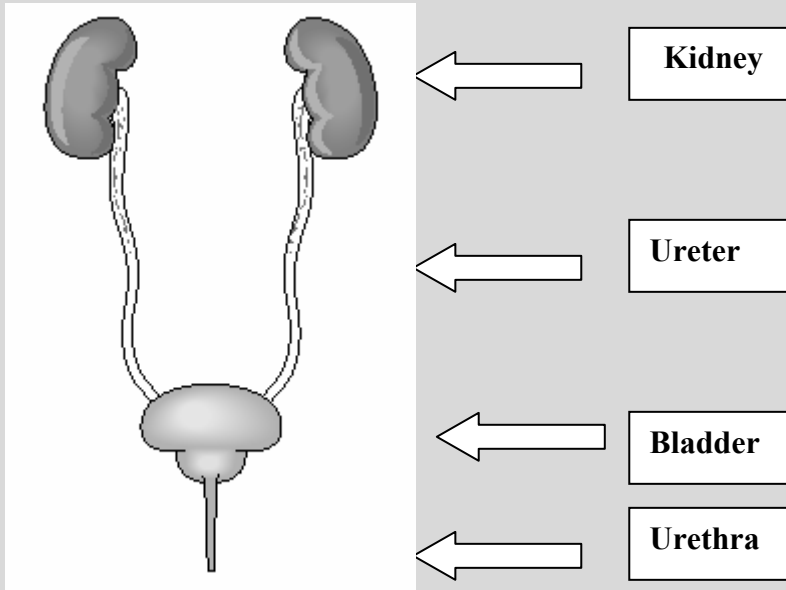
A endocrine system	In the endocrine system, cells do release chemicals, but the effect can be on cells a great distance away.
B skeletal system	The skeletal system is not involved in communication between cells.
C muscular system	Thought the muscular system can quickly respond to signals from the nervous system, it does not send them.
D nervous system *	The neurons shown above are one of the basic functional cells of the nervous system. They are specialized to send nervous impulses in the form of chemical and electrical signals from projection on the bottom of one cell (axon) to other the tips of the projections on another (dendrites).

2. When a person is frightened by a wild animal, some organ systems immediately become active, while others are suppressed. Which of these systems is likely to be suppressed?

A Muscular system	A person would need muscle activity to escape a dangerous situation or to fight.
B Respiratory system	Increased respiration would bring needed oxygen to the muscles and brain.
C Endocrine system	The endocrine system (adrenal gland) sends chemical signals to the brain to increase pulse rate and respiration.
D Digestive system *	The digestive system would be suppressed. In an emergency situation, digestion takes second priority to the fight or flight response.

3. A portion of the human excretory system is represented in the diagram. The order in which urine flows through the system is —

**Picture:**



**Right Answer:**

**H** kidney → ureter → bladder → urethra

**Why?**

This is the correct order in which the urine flows through the system.

**Wrong Answers:**

**F** urethra → bladder → ureter → kidney

**G** ureter → kidney → bladder → urethra

**J** bladder → urethra → kidney → ureter

**Why?**

None of the other choices start with the kidneys where the urine is produced.

**Test Question:**

4. Nutrients from digested food move from the digestive system directly into the —

**Right Answer:**

**A** circulatory system

**Wrong Answers:**

**B** integumentary system

**C** excretory system

**D** endocrine system

**Why?**

Nutrients move from the digestive system to the circulatory system.

**Why?**

**B.** Integumentary system is the skin and its accessory organs

**C.** The excretory system uses the kidneys to filter and remove nitrogenous waste (urine). Students tend to confuse this with removal of solid waste from the large intestine.

**D.** The endocrine system produces hormones that control body systems.

Answers to Quiz.

1. J

2. A

3. D

4. G

5. C